

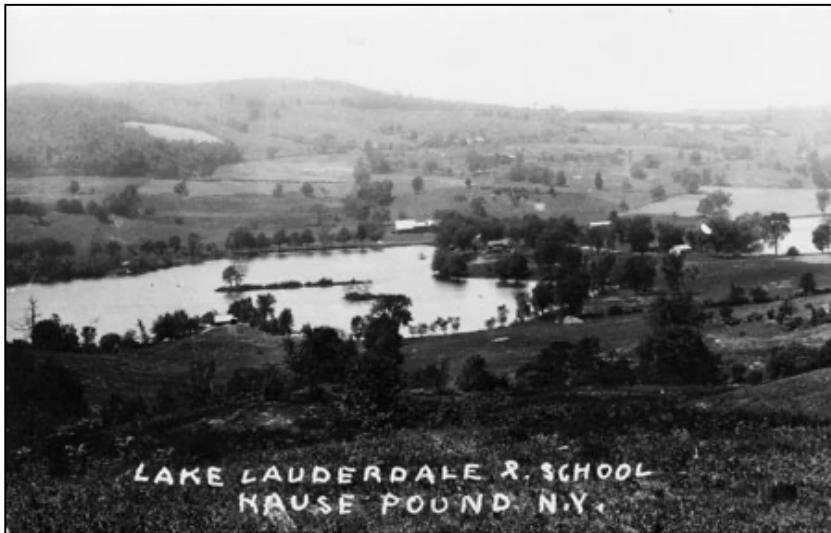


NEWSLETTER

Lake Lauderdale Improvement Association, Inc.

P.O. Box 527, Cambridge, New York 12816

Remember our Mission: To preserve and maintain a pristine lake and pond for the benefit of lake owners and the community



One of the Antique Postcards from the collection on our website www.LakeLauderdale.org

LLIA Officers:

President: Chris Johnson
Vice President: Don Segal
Treasurer: Tracey Pfitz
Secretary: Virginia Beirne
X-Officio: Gail Pfister

LLIA Board Members:

Wayne Biasi Ed Cody, Jr.
Richard Corr Gary Pedersen
Ed Pfitz Mary Talmadge
Dan Wiley Martha Tetrault
Donna Trotter Gail Pfister

Event Calendar:

- Mark your calendars for the **LLIA Annual Meeting and Super 50/50 Raffle** at 12:00 on Saturday August 5th at the Washington County Park Pavilion
- We still need volunteers for the 27th Annual Community Fishing Contest at 8:00 on Saturday August 5th at the Washington County Park Pavilion. Contact Deanna Spindiff at 518-441-4066 and let her know you want to help.
- Labor Day Flotilla and 50/50 Raffle at Noon on Saturday September 2nd at the Shallows across from the County Beach
- The Poker Run Fund Raiser will start from the September 2nd Flotilla at 1:00 and finish at 3:00!
- Come to Wallie's in Greenwich at 6:00 on Wednesday July 26th and August 9th to enjoy some food, drinks, and great conversation with your Lake Lauderdale neighbors. When you arrive, let the host know you are there for LLIA Night, and they will direct you to the Green Room for ½ off appetizers and \$5 pints.
- All raffle tickets can be purchased at the event or through the mail or in person with Tracey Pfitz at 518-986-4055 or Gail Pfister at 609-529-4677

Community Updates:

- We have many important items to discuss during the **LLIA Annual Meeting** at 12:00 on Saturday, August 5th. If you have anything that you would like added to the Agenda, please contact Chris Johnson at 518-588-8095.
- Time is running out for you to participate in the **Super 50/50 Raffle**. Contact Gail Pfister at 609-529-4677 to ensure you are part of it. This raffle is our primary fundraising event and supports all LLIA activities. Please consider asking any guest who enjoyed their time at your camp to purchase one. Our goal is to sell all 200 tickets at \$100 each so the winner could get up to \$10,000!
- The **Community Fishing Contest** is the primary way LLIA gives back to our local community. Thank you to everyone who has already donated or volunteered to help. There is always room for more, so reach out to Deanna Spindiff at 518-441-4066 and let her know you want to get involved.
- Thank you to everyone who participated in the **Independence Day Flotilla**. We had great weather and a large turnout which lead right into our first ever **Poker Run**. Thank you to our cooks and the five host docks as well as congratulations to our winners Sean Beirne and Bill Pfister Jr.
- After such a positive response, we will host another **Poker Run** following the **Labor Day Flotilla**. We had over 30 participants for the inaugural run and we expect to exceed that next time. The entry fee is \$20 and you can paddle or float or boat to the decorated docks spread throughout the Lake. You will get one playing card at each dock and whoever has the best Poker Hand at the end will win 50% of the pot. Contact Chris Johnson at 518-588-8095 if you want to be a host dock. We may also add a BINGO game to the Poker Run!
- Don't forget to renew your LLIA Membership. Dues are \$30 per person. You can mail it to the PO Box or use PayPal on our Website or talk to Tracey Pfitz at 518-986-4055.
- We need someone to lead our Ways and Means Committee. Please consider volunteering for this important role because fund raising is the only way we survive.
- Thank you to everyone who supported last season's Sonar treatment - it's not too late to contribute now! The application is still providing great results. There is no visible Eurasian Milfoil in the lake or pond. All of the weeds you see are healthy indigenous species. Water Chestnuts are unaffected by Sonar and still a major concern. If you think you see any sign of them, tell someone on the LLIA Board immediately.
- Applying lawn fertilizer to turf adjacent to the lake is not recommended. The fertilizer that makes the grass grow also makes aquatic weeds grow faster when it leaches into the water. Speaking of fertilizer - water fowl droppings also are a source of nutrients for the weeds, We realize that we will always have a small population here at the lake, but we don't want to encourage them. Therefore, please do not feed the ducks and please advise your guests and tenants of this, as well.
- Interested in a **Paint & Sip**? You are in luck because local art professional Diane Segal 518-229-7952 will teach a class to you and your guests with a \$35 (each) donation to LLIA. All art supplies are included, just bring your wine and inspiration!
- If you have any questions or concerns or additions to a future newsletter, feel free to call the LLIA President at 518-588-8095 or email chris.johnson@LakeLauderdale.org